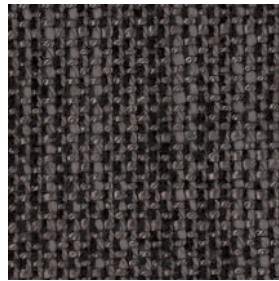
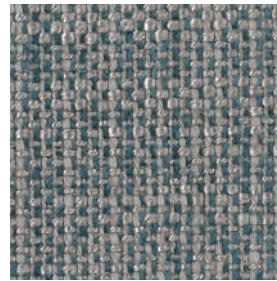


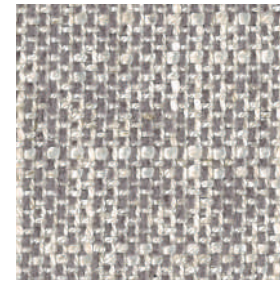
aqua



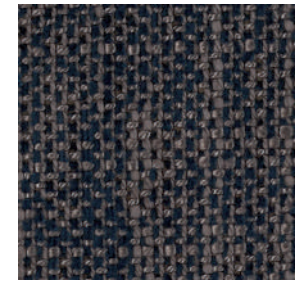
asphalt



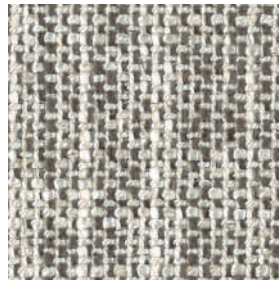
denim



lichtgrau



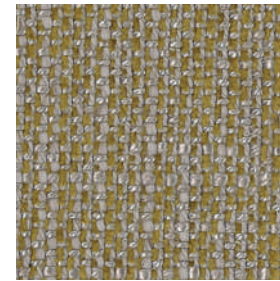
marine



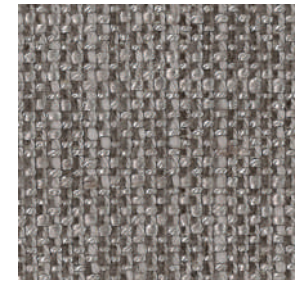
moos



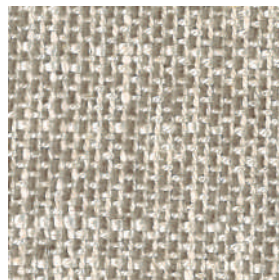
natur



safran



sand



schilf

Amir

Flachgewebe

Oberfläche mit leichtem elegantem Glanz

Stoffgruppe E

59% VI, 33% CO, 8% LI

Scheuertouren: 35.000

Lichtechtheit: 4 bis 5

Pillingbildung: 3 - 4

signet[®]
bewegende Formen