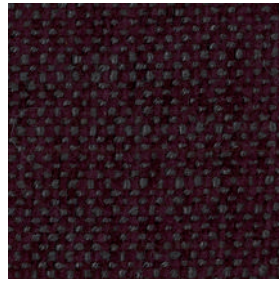
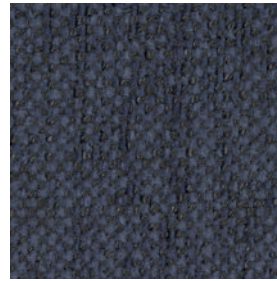




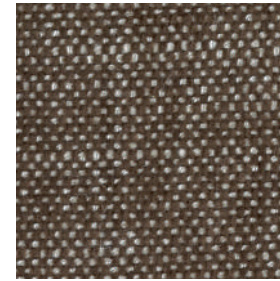
limette



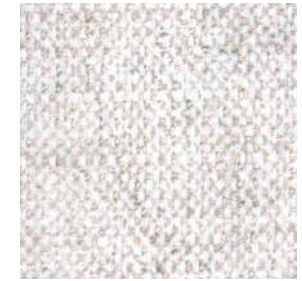
beere



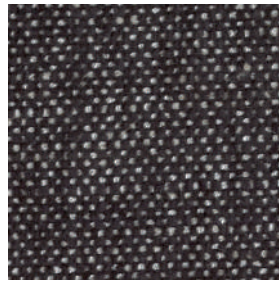
blau-grau



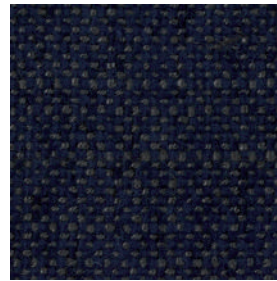
caramel



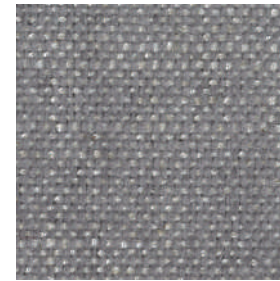
creme



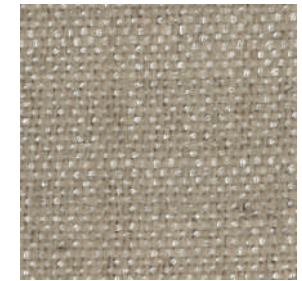
graphit



nachtblau



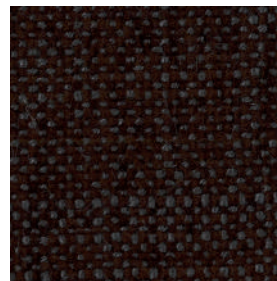
samtgrau



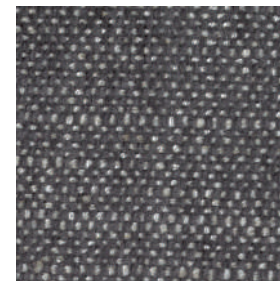
sand



schilf



schoko



stahl



schwarz

Simba

Flachgewebe
mit softig angenehmer Haptik

Stoffgruppe B
40% PL, 40% VI, 20 % LI
Scheuertouren: 25.000
Lichtechtheit: 5
Pillingbildung: 3/4

